
PADRES PEDAL **THE CAUSE**

EVENT HANDBOOK

April 7, 2024

TABLE OF CONTENTS

TOP 5 FAQs	2
2024 HIGHLIGHTS	3
VENUE MAP	4
EVENT SCHEDULE	5
PARTICIPANT PACKET INFO	6
EVENT DAY INFO	7
FUNDRAISING INCENTIVES	10
CYCLING COURSE INFO	11
CYCLING COURSE MAPS	14
CYCLING AID STATION INFO	17
5K AND KIDS CHALLENGE INFO	18
SPIN INFO	19
FOOD MENUS	20
VOLUNTEER PROGRAM	21
THANK YOU SPONSORS	22

TOP 5 FAQs

1. IS PARKING AVAILABLE?

On event day, parking will be available free of charge in either the Tailgate Lot (on Imperial Blvd) or Padres Parkade (on 10th and J St. Parking). Lots are reserved for Padres Pedal the Cause attendees only. See page 4 for a map of the surrounding area.

2. CAN I LEAVE MY BIKE AT PETCO PARK ON SATURDAY NIGHT (APRIL 6)?

Yes, participants will be able to check in their bike on Saturday night at Petco Park during packet pick-up from 4:30pm-6:30pm. Your bike will be stored and secured in Power Alley (a covered area) and available for pick-up at the same location in the morning. However, there is a large convention happening in Downtown San Diego that may cause traffic, so we encourage you to just bring your bike with you on Sunday if possible.

3. WHAT TIME DOES MY EVENT START?

The start times are as follows. See page 5 for a full schedule of the day.

Otay Odyssey (75 miles) – 7:00am

Olympic Challenge (55 miles) – 8:00am

Rocky Road (34 miles) – 8:30am

Coronado Classic (25 miles) – 9:00am

5K Walk/Run – 10:00am

Spin – 9:00am, 10:00am, 11:00am, 12:00pm

Kids Zone – 10:00am – 3:00pm

Kids Challenge – 12:00pm

4. CAN I CHANGE TO A DIFFERENT CYCLING DISTANCE ON SUNDAY MORNING?

Decrease Distance: Yes, we do not want anyone to be stuck on a course that they do not feel prepared for. If you would like to ride a shorter distance, you must let the staff know at registration. We will make sure you have the correct bib and start time. Fundraising commitments will not be lowered.

Increase Distance: Yes, but you will need to let staff know at registration to receive the correct bib and your fundraising commitment will be increased in conjunction.

5. WHEN IS PACKET PICK-UP?

Saturday, April 6

10:00am-2:00pm at UCSD Baseball Field ([click here for more details](#))

4:30pm-6:30pm at the East Village Gate at Petco Park

Sunday, April 7

6:00am day-of registration is available at East Village Gate at Petco Park

*See page 6 for full details on packet pick-up.

2024 HIGHLIGHTS

PARKING

On event day, parking will be available free of charge in either the Tailgate Lot (on Imperial Blvd) or Padres Parkade (on 10th and J St. Parking). Lots are reserved for Padres Pedal the Cause attendees only. See page 4 for a map of the surrounding area. If these lots exceed capacity, participants will be directed to other reserved parking areas. Reserved VIP parking presented by Lexus is also available in the Lexus Lot on Imperial adjacent to Park Blvd.



ENTRANCE

The event day entrance and check-in will be located at the East Village Gate on 10th and K St and provides easy access to Gallagher Square.

BE ON TIME FOR YOUR EVENT

Please plan to be in the starting chute 10 minutes before your start time. For the cycling routes, please note that no one will be permitted to start after 9:00am due to the Coronado Bridge re-opening schedule.

BRING THE WHOLE FAMILY AND ENJOY THE KIDS ZONE

The Kids Zone will be open from 10:00am-3:00pm and located in Gallagher Square. Enjoy face painters, games and activities, and arrive early to meet our Superheroes!

THE KIDS CHALLENGE MEETING POINT

Kids and families will meet at the Kids Start Line at 11:50am to be escorted onto the field for the Kids Challenge. Look for the balloon arch located across from the Living Proof Bell presented by Eisai!

ID CHECK

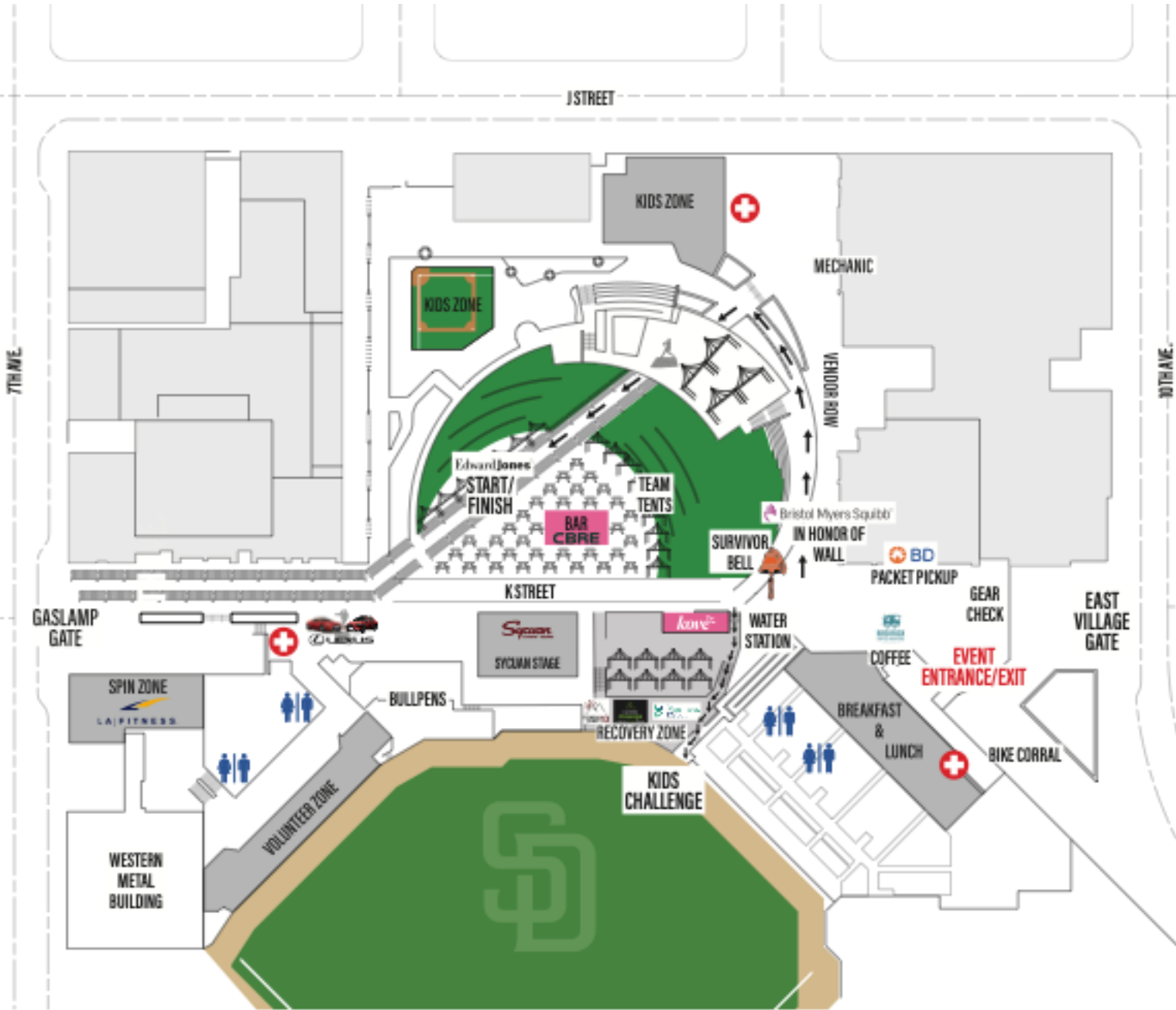
Please bring your ID with you on event day. There will be an ID check kiosk next to the merchandize tent to validate IDs prior to any bar service. You will get a red wristband once your ID is checked that you must wear to receive bar service.

SELFIE ZONE presented by Erasca Foundation

Grab your family and friends and take a Selfie at our Selfie Zone! Remember to tag us and use the hashtags #PadresPedal #EndCancer #Curebound



VENUE MAP



EVENT SCHEDULE



SATURDAY, APRIL 6, 2024

10:00am – 2:00pm | Packet pick-up at UCSD Baseball Field

3685 Voigt Dr, La Jolla, CA 92093 Free parking is available – ([click here for more details](#))

4:30pm – 6:30pm | Packet pick-up at Petco Park, East Village Gate, corner of 10th & K St

100 Park Blvd, San Diego, CA 92101 – free parking is available at the Lexus Premier Lot

SUNDAY, APRIL 7, 2024

6:00am	Registration & check-in open at East Village Gate, breakfast available
7:00am	Otay Odyssey Start (75 mi)
8:00am	Olympic Challenge Start (55 mi)
8:30am	Rocky Road (34 mi gravel hybrid)
9:00am	Coronado Classic Start (25 mi)
9:00am – 1:00pm	Spin Classes
10:00am	5K Walk/Run Start
10:00am – 2:00pm	Kids Zone Open
10:30am – 3:30pm	Lunch/ Bar Service Open
11:00am - 3:00pm	Live Music courtesy of Republic of Music
12:00pm	Kids Challenge
1:15pm	Main Stage Program on the Sycuan Stage
4:00pm	Petco Park Closes

ANTICIPATED RETURN TIMES OF PARTICIPANTS

5K Walk/Run: between 10:20am – 11:30am

Coronado Classic Riders: between 10:50am - 12:15pm

Olympic Challenge Riders: between 11:15am - 2:30pm

Rocky Road: between 10:53am – 12:40pm

Otay Odyssey Riders: between 12:00pm - 2:00pm

*Note: The Otay Odyssey has a strictly enforced cut off time to ensure rider safety within traffic control and permitting time frames. Please refer to page 13 for more details.

CELEBRATE OUR COLLECTIVE IMPACT

Enjoy mission-oriented moments throughout event day. Visit the “In Honor of” wall presented by Bristol Myers Squibb. Pick-up an “In Honor of” sign presented by NuVasive at packet pick-up, the Kids Zone, or the Curebound tent to share who you are honoring with your participation. Survivors/ fighters, stop by the new Living Proof Bell presented by Eisai to celebrate your fight and receive a Living Proof shirt.



PARTICIPANT PACKET INFO

PACKET PICK-UP presented by BD

Prior to event day, we will hold two packet pick-ups that are open to all:

Saturday, April 6 | 10:00am – 2:00pm | UCSD Baseball Field

- ([click here for more details](#))

Saturday, April 6 | 4:30pm – 6:30pm | Petco Park

- East Village Gate, corner of K & Park Blvd
- Free parking available in the Lexus Premier Lot.



WHAT YOU WILL NEED TO PICK-UP YOUR PACKET

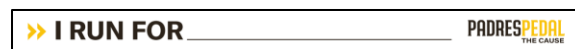
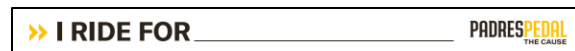
- Driver's License
- Group Packet pick-up: If you would like to pick-up packets for other members of your team, you will need to fill out a form and secure each person's signature prior to the pick-up. ([Click here](#) for the proxy form.) If you are picking up for a group of 5 or more, please notify liz@curebound.org or megan@curebound.org by Tuesday evening (4/2).

PARTICIPANT PACKETS

Jerseys/shirts and participant bags will be distributed during the packet pick-up process. If you have earned a Yellow Jersey item, you will also receive that at packet pick-up.

PARTICIPANT BAGS INCLUDE:

- Drawstring Bag presented by Thermo Fisher Scientific
- Participant Bib* presented by Lusardi Construction
- Padres Pedal water bottles presented by Curebound
- "I Ride For" and "I Run For" wristbands
- All-access wristbands presented by W.E. O'Neil Construction



*Place your bib on the front of your bike so that it is visible to traffic control personnel.

*5K participants: secure your bib to the front of your shirt.

*Please do not bend the bibs.

EVENT DAY INFO

BIKE CORRAL

The bike corral will be located outside the East Village Gate. You will be asked to dismount and check your bike into the secure corral before you enjoy the celebration in Gallagher Square. You must have your wristband with your rider # on it to retrieve your bike from the bike corral after the event.

GEAR CHECK

If you bring extra clothes for warmth or to wear post-ride, you can check a bag at the East Village Gate before your ride. Gear check will also be available at the Bikeway Village and Mountain Hawk Aid Stations. **IMPORTANT:** Gear left at off-site locations will be transported back to Petco Park as late as 5PM when all riders have cleared the course.

ALL ACCESS WRISTBANDS Presented by W.E. O'Neil

For those who earn an all-access wristband, please plan to wear it all day, as you will not be able to get food, drinks, or your gear/ bike without it. If you misplace your wristband, please find a Curebound staff member or volunteer to get a new one.



Friends, family, and colleagues are welcome at Petco Park for all festivities. General access for cheering and celebrating is free. If spectators would like to enjoy food and drinks, there are options for guests to acquire wristbands.

- **All-Access Wristband** – commit to raising \$250 by April 30th with Curebound staff at Packet Pickuo to enjoy food, bar access, and the recovery zone all day
- **Food Only Wristband** – available for purchase online and on event day for \$40 or pre-purchase wristbands on the Curebound website
- **ID Checked for 21+ (Red)**

NOTE: All participants 21+ who wish to consume alcohol will have to get their ID checked at the ID check kiosk next to merchandise.



EVENT DAY INFO

PARKING

On event day, parking will be available free of charge in either the Tailgate Lot (on Imperial Blvd) or Padres Parkade (on 10th and J St. Parking). Lots are reserved for Padres Pedal the Cause attendees only. See page 4 for a map of the surrounding area. If these lots exceed capacity, participants will be directed to other reserved parking areas. Reserved VIP parking presented by Lexus is also available in the Lexus Lot on Imperial adjacent to Park Blvd.



BIKE MAINTENANCE

Bike maintenance (minor adjustments; chain lubricant, air, etc.) will be available before the start, as well as on the course. Please plan accordingly and come early if you need service. We strongly recommend getting your bike tuned up prior to event weekend as our mechanics will not have time for complex maintenance.

“IN HONOR OF” WALLS presented by Bristol Myers Squibb

Plan to meet your team at the designated Team Photo area near the Bumble Bee building for an awesome group shot together in front of the “In Honor Of” wall presented by Bristol Myers Squibb.



COURSE MAPS

The courses will be very well marked, but please feel free to download the courses on ‘RideWithGPS’ with the links below:

Coronado Classic: [Padres Pedal The Cause 2024 \(ridewithgps.com\)](https://ridewithgps.com/courses/padres-pedal-the-cause-2024-coronado-classic)

Olympic Challenge: [Padres Pedal The Cause 2024 \(ridewithgps.com\)](https://ridewithgps.com/courses/padres-pedal-the-cause-2024-olympic-challenge)

Rocky Road: [Padres Pedal The Cause 2024 \(ridewithgps.com\)](https://ridewithgps.com/courses/padres-pedal-the-cause-2024-rocky-road)

Otay Odyssey: [Padres Pedal The Cause 2024 \(ridewithgps.com\)](https://ridewithgps.com/courses/padres-pedal-the-cause-2024-otay-odyssey)

5K: [Padres Pedal The Cause 2024 \(ridewithgps.com\)](https://ridewithgps.com/courses/padres-pedal-the-cause-2024-5k)

EVENT DAY INFO



RECOVERY ZONE presented by Jet AMG

Stop by our Recovery Zone from 10:30am-3:30pm located on The Beach. The Physical Therapy Effect will provide physical therapy services and Cyclist Massage will offer massage services. Fitness Quest 10 will be providing Hyperice products including Normatec boots and Hypervolts. Please check in at the respective service desk to reserve a time for your complimentary 10-minute massage, physical therapy session, or Hyperice experience!



SOCIAL MEDIA

Make sure to capture your experience and share it on the screen by using the hashtag #PadresPedal during the event! Tag us on Facebook (@PadresPedaltheCause, @Curebound) and Instagram (@PadresPedaltheCause, @CureboundOfficial) with hashtags: #PadresPedal #EndCancer #Curebound

KIDS ZONE

The Kids Zone will be open from 10:00am – 3:00pm and located in Gallagher Square. Enjoy face painters, games, and activities, and arrive early to meet our Superheroes!

LIIVING PROOF ITEM presented by Eisai

We invite our cancer survivors and fighters to pick-up their Living Proof shirt at the Living Proof tent. Living Proof shirts, presented by Eisai, will be given to all participants who have indicated they are a fighter or survivor during the registration process.

START LINE presented by Edward Jones

Get ready to kick start your ride or run! Our start line is located in the action in Gallagher Square. Cheer on participants as they head out on the course.



Edward Jones

FUNDRAISING INCENTIVES

Go the extra mile to accelerate cures. Padres Pedal participants who want to make a bigger impact can commit to an incentive level or fundraise enough to become a Top Fundraiser. Knowing you are making a significant contribution toward creating a world without cancer is its own reward. But it comes with recognition too!

CURE CREATOR – Fundraisers who raise \$2,500+

- Recognition on event day and at other Padres Pedal events
- Customized Padres Pedal luggage tag with collectible 2024 pin
- Invitation to Curebound Night at the Ballpark on June 21

YELLOW JERSEY – Fundraisers who raise \$5,000+

- Includes benefits above and Padres Pedal Yellow Jersey or Apparel Item

MVP – Fundraisers who raise \$10,000+

- Includes benefits above and complimentary one-night stay on Saturday, April 6 at the Hard Rock Hotel next to Petco Park

PODIUM – Fundraisers who raise \$25,000+

- Includes benefits above and invitation to the Padres Pedal Podium Fundraiser Experience during the June 21st Curebound Night at the Padres game
- Exclusive 2024 Podium Gift

CYCLING COURSE INFO

SAG SUPPORT AND COURSE MARSHALS

The Padres Pedal the Cause support team will be comprised of on-course SAG vehicles, stationary mechanical support at Aid Stations, and on-course ride marshals; with a direct line to the Padres Pedal the Cause Command Center. There will also be stationary Course Pointers and traffic control at many intersections to provide safety.

SAG: The SAG support team will be in vehicles equipped with mechanical supplies and first-aid. Padres Pedal the Cause SAG support team members will respond to incidents, as directed by the Command Center. Please call the Emergency Dispatch Number—**(619) 795-5777**—if you have a mechanical issue on the course and need SAG support sent to your location. This number will also be listed on your wristband for easy access.

Ride Marshals: Trained volunteers will serve as Ride Marshals riding on bikes along the route. Their primary focus is to increase rider safety and provide extra support to riders who need simple mechanical support on the route. You will see the Ride Marshalls wearing GREEN bibs.



EMERGENCY NUMBER **(619) 795-5777**

You will have an Emergency Dispatch Number in your ride packet and on your wristband. This number will connect you with Padres Pedal Command Center. Call this number if you need mechanical or SAG support on the course, or if you are bringing something to the attention of Padres Pedal the Cause Command Center. If there is a medical emergency, you should first call 911 and then call this emergency dispatch number to inform the Command Center.

NURSE SUPPORT

UC San Diego Health registered nurses will be present at each aid station to support any minor medical needs. Thank you, UC San Diego Health!

UC San Diego Health

CORONADO BRIDGE CLOSURE

The Coronado Bridge closure is a highlight for cyclists to ride over the iconic San Diego landmark! Please obey traffic control and ride swiftly over the bridge without stopping or dismounting off your bike at any point on the bridge.

CYCLING COURSE INFO

RULES OF THE ROAD

Padres Pedal the Cause is conducted on open roads with vehicular traffic. Roads include both marked and unmarked hazards. We have taken every measure to make sure the ride is as safe as possible, but please remember that your safety is in your OWN hands. Remember to ALWAYS check your helmet and bike before riding. **RULES OF THE ROAD—THIS IS A RIDE NOT A RACE!**

- Always wear a helmet. No helmet, no ride
- Carry your ID and insurance card
- Make sure you are wearing your rider wristband and your participant bib
- When passing riders, be courteous and use extreme caution when passing riders that may be less experienced. Always call out when you are passing
- Obey all traffic signals, stop signs, and laws

BIKE PATH SAFETY PROTOCOL

- Use caution, controlled pace, and ride single file on bike paths
- The bike paths will be open to the public on all courses and there will be on-coming riders with two-way traffic so use caution, stay to the right, and only pass when safe

ROAD CONDITIONS

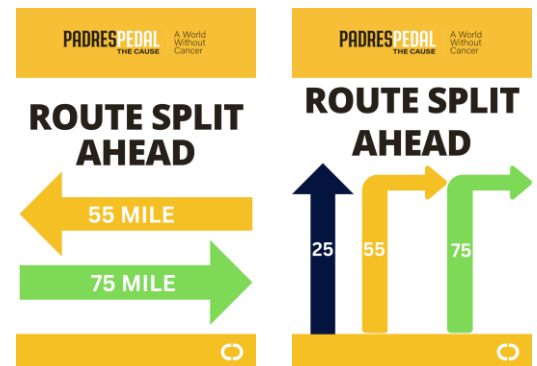
- The course roads are not perfect and may have uneven surfaces, potholes, cracks, gravel, sand, and debris on the route. **Exercise Caution**
- Most of the course is open to vehicular traffic so exercise caution and ride safely Stay to the right and never ride more than double file and only when appropriate

RAILROAD TRACKS

There are several railroad tracks in the downtown area on the course. We have done our best to mark them. Please SLOW down, call them out, and ride over perpendicularly.

COURSE SIGNAGE

The courses will be marked with directional signs posted on the side of the road at all turns. However, we encourage you to download the course to your device. For safety, event notification signs will be put on the course a week in advance to notify local traffic that cyclists will be on the road on March 18.



CYCLING COURSE INFO

CUT OFF TIMES ON THE COURSE

We take rider safety seriously and have put into place an extensive traffic control plan. In order to ensure safety, there will be strict cut off times enforced at select areas of the course, noted below. If you do not meet these cut off times you will be directed to take a shorter route or be picked up by SAG and brought back to Petco Park. These cut offs are MANDATORY and are enforced for everyone’s safety.

ROUTE	LOCATION	TIME CUT OFF	LATE RIDER ACTION
25 Miles	Coronado Bridge (please make sure you are in the start corral by 8:50am)	9:35am	Riders placed into SAG vehicles and taken across the bridge
75 Miles	Mile 34.5 Right turn onto Otay Lakes Rd	10:08am	Riders must turn left and follow 55-mile route
75 Miles	Mile 54.4 Leave Cuyamaca College Aid Station	12:00pm	SAG vehicles take riders to finish or to next aid station at Sweetwater Staging (Mile 67.7)

*Note: The Finish Line Festival will be ending promptly at 4:00pm. We encourage all participants who want to be present for the live music, food and beverage to plan their pace accordingly and take a cut off for a shorter course if necessary. There will be marshals along the course enforcing the above MANDATORY cut off times.

THANK YOU TO OUR ON COURSE SPONSORS!

PFIZER – Adopt a Mile Partner

SYCUAN– Adopt a Mile Partner

LEXUS – The official luxury vehicle and Lead Car of Padres Pedal the Cause

MOSSY – The official On Course Support Vehicles of Padres Pedal the Cause

REPUBLIC SERVICES – The official Trash Services of Padres Pedal the Cause

STAX – The official Movable Storage Team of Padres Pedal the Cause



CYCLING COURSE MAPS

CORONADO CLASSIC – 25 MILES

J.P.Morgan | CHASE 

Start Time: 9:00am

(Please be in start corral at 8:50am)

*There will be NO late start permitted

Elevation Gain: 371 ft.

of Aid Stations: 1

- Bikeway Village - mile 13

Course Color: Blue

Gear Check: Available for all riders at Bikeway Village

Course Route: [25-mile route](#)

Cut Off Time: Please make sure you are in the start corral by 8:50am. Coronado Bridge Cut Off is 9:35am. After that point, riders placed into SAG vehicles and taken across the bridge.



CYCLING COURSE MAPS

OLYMPIC CHALLENGE – 55 MILES

Start Time: 8:00am

Elevation Gain: 2,684 ft.

of Aid Stations: 3

- Bikeway Village - mile 13
- Mountain Hawk Park – mile 34
- Sweetwater Staging Area – mile 44

Course Color: Yellow

Gear Check: Available for all riders at Bikeway Village & Mountain Hawk

Course Route: [55-mile route](#)



CYCLING COURSE MAPS

OTAY ODYSSEY – 75 MILES

Start Time: 7:00am (bike lights recommended)

Elevation Gain: 6,002 ft.

of Aid Stations: 4

- Bikeway Village – mile 13
- Mountain Hawk Park – mile 34
- Cuyamaca College – mile 54.4
- Sweetwater Staging Area – mile 67.7

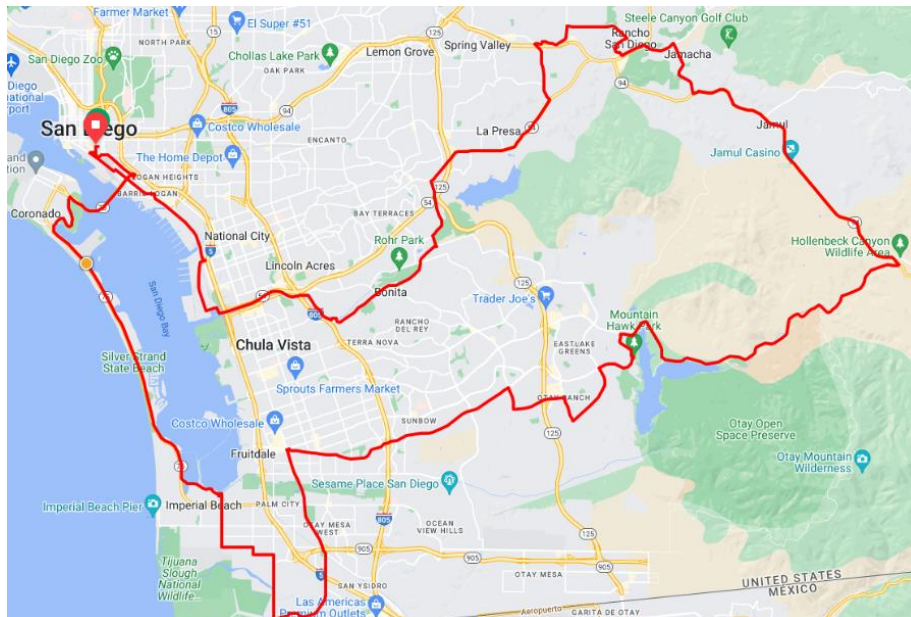
Course Color: Green

Gear Check: Available for all riders at Bikeway Village & Mountain Hawk

Course Route: [75-mile route](#)

Cut Off Times:

- Please be advised, cut off at 10:08am at mile 34.5 at Otoy Lakes Rd. Riders must turn left and follow 55-mile route.
- Please be advised, cut off time at 12:00pm at miles 54.4 at Cuyamaca College Aid Station. Riders placed into SAG vehicles to finish or to next aid station at Sweetwater Staging (Mile 67.7)



CYCLING AID STATION INFO

1. ***BIKEWAY VILLAGE** (535 Florence Street, Imperial Beach)

- Courses: All
- Volunteer Group: BD

2. ***MOUNTAIN HAWK PARK** (1475 Lake Crest Dr, Chula Vista)

- Courses: Olympic Challenge
- Volunteer Group: Sanford Burnham Prebys

3. **CUYAMACA COLLEGE** (900 Rancho San Diego Pkwy, El Cajon)

- Presented by Illumina
- Courses: Otay Odyssey
- Volunteer Group: Illumina
- Special Food Options: wraps provided by Sycuan will be served
- **CLOSE OF AID STATION:** The aid station will close at 1:00pm; all riders will need to exit.

illumina®

4. **SWEETWATER STAGING AREA** (3121 Bonita Rd, Chula Vista)

- Courses: Olympic Challenge, Otay Odyssey
- Volunteer Group: Deloitte

* Gear check available for cyclist to leave gear and retrieve it after the ride at Petco Park. Items may not arrive at Petco Park until the close of the day at 5:00pm.

5K AND KIDS CHALLENGE INFO

KIDS CHALLENGE - Run the Bases: 12:00pm

Calling all superheroes! The Kids Challenge is an opportunity for kids to run the bases at Petco Park. Children are encouraged to come dressed in capes and costume. **No bikes, trikes or scooters allowed**. All children will receive a Kids Challenge t-shirt and a special finisher medal. A few details to keep in mind:

- Kids and families will meet at the Kids Start Line at 11:50am to be escorted onto the field for the Kids Challenge. Look for the balloon arch located across from the Survivor Bell presented by Eisai!
- Day-of registration: Available for a \$40 registration fee
- Kids Zone: Open from 10:00am-3:00pm for all kids to enjoy activities, games, face painting and to meet real life superheroes!

5K WALK/RUN

The family friendly 5K walk/run will start at the same start line as the cycling routes and take a tour of the Embarcadero before returning to Petco Park. Strollers are allowed.

Unfortunately, no pets will be allowed on the course. A few details to keep in mind:

- **Start Time:** 10:00am
- **Check-In:** East Village Gate starting at 6:00am
- **Course Link:** [5k Route](#)
- **Aid Station:** There will be two water stop at the halfway point
- **Cheer Station:** Thank you to TVIA-SD4, Lululemon and OrangeTheory Fitness for leading volunteers and fun cheer stations!

SPIN INFO

SPIN ZONE

Our Spin Zone features four classes of stationary cycling with bikes provided by LA Fitness located at Palm Court Plaza.

Check-in will take place at the main participant registration area at East Village Gate. All spin participants are encouraged to join the festivities after class to enjoy food and live music with friends and family.

Class Schedule and Overview:

Check-In: Check-in will be available as early as 6:00am at the Petco Park – East Village Gate. Please arrive at least 30 minutes before your class to make sure you get checked in, enjoy breakfast, and are ready to spin!

Classes: 50-minute DJ led classes at 9:00am, 10:00am, 11:00am, and 12:00pm

Instructors: Classes will be taught by local instructors from popular local spin studios. Big shout out to our spin instructors and DJ Jon Beezy for volunteering their time!

9:00 am – Lindsay Lennon

10:00 am – Francis St. John

11:00 am – CycleBar

12:00 pm – Anne Marbarger

Style: The class will be a traditional style spin class with a live DJ and a chance to see yourself and teammates on the right field videoboard while you are pedaling away. Each class will show the unique style of the studios represented by the instructors, and all will be inspiring and fun.

Clips/ Shoes: The bikes are Keiser Stationary Bikes with SPD clips. If you have spin shoes, you are welcome to wear them. If not, we recommend a hard-sole, close-toed athletic shoe.



LA | FITNESS®

FOOD MENU

There will be a variety of food and beverage options throughout the event for participants and guests to enjoy. Below is a list of the options that will be provided. If you have special dietary restrictions, we recommend that you look over this list before the event and plan accordingly. Guests can purchase \$40 food wristbands on site.

BREAKFAST

Served 6:00am-10:00am

Bird Rock Coffee | Blend and Decaf

Grab-and Go Options courtesy of Suja Juice and Melissa's Produce featuring bananas, granola bars, oranges, green juice, etc.

LUNCH

Served 10:30am-3:30pm

Prince St. Pizza | Meat and Veggie Pizza with Salad

The Kebab Shop | Chicken and Rice

Northgate Market | Variety of Tortas

La Carniceria | Prime Flat Steak

Bumble Bee Seafoods | Grab and Go Tuna

Ballpark Eats | Beef and Veggie Sliders

La Fortaleza | Chips

Sambazon | Acai Popsicles

BEVERAGES

 Bar Service Presented by CBRE

Served 10:30am – 3:30pm

Ballast Point

Kové Exclusive Curebound Flavor

Cutwater Canned Cocktails

Constellation Brewing

Nova Hard Kombucha

Suja Variety of Beverages

Essentia Water

Soft Drinks



NOTE: All participants 21+ who wish to consume alcohol will have to get their ID checked at the Padres Pedal ID Check Kiosk located next to the bars.

VOLUNTEER PROGRAM

VOLUNTEER PROGRAM presented by ResMed

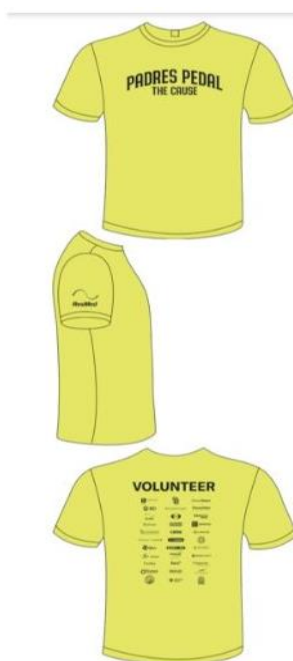
Volunteers play a vital role in the success of our event. Look for them on the course and throughout Petco Park wearing yellow shirts.



Volunteering at Petco Park: If you are scheduled to work a volunteer shift at Petco Park, you will need to check in at the Volunteer check-in located at East Village Gate 30 minutes prior to your shift. Volunteers will have access to snacks throughout the day at the Volunteer Zone. We encourage you to bring a water bottle to refill at the hydration station.

Volunteering on the Course: If you are volunteering offsite, please arrive to your offsite location 30 minutes early and check-in with your volunteer leader to get a t-shirt and instructions. Volunteers will have access to food at the aid stations. There is no need to arrive at Petco Park prior to your shift. All volunteers are welcome at Petco Park following their shift.

Volunteer Food: Light food options will be provided for volunteers in the volunteer zone. If volunteers are interested in an all-inclusive wristband, they are available for purchase on site at merchandise tent.



THANK YOU SPONSORS!

Your support means 100% of fundraising dollars will fund cancer research!





Committed to enriching life by promoting health

We are proud to support Padres Pedal the Cause — partnering for positive impact to improve the health of our clients and communities.

edwardjones.com/growingourimpact

Edward Jones[®]

CAU-17856-A © 2024 EDWARD D. JONES & CO., L.P. ALL RIGHTS RESERVED. AECSPAD



KOMAN FAMILY
FOUNDATION

**Thank you to the Koman Family Foundation
for your leadership and commitment
in helping create a world without cancer.**



THANK YOU SAN DIEGO PADRES!





A better healthy start

Bristol Myers Squibb is a proud sponsor of Padres Pedal the Cause





Janux Therapeutics is a proud sponsor of Padres Pedal the Cause as we race to develop cutting-edge therapeutics to transform the lives of cancer patients.



CREATING HOPE THROUGH INNOVATION

At Eisai, everything we do is guided by a simple principle: patients and their families come first. We spend time with them. We listen and we learn about their lives, their desires and their greatest needs. *We call this human health care or hhc*, giving first thoughts to patients and their families and helping increase the benefits health care provides.

Our hhc mission is what drives us to discover innovative solutions and therapies that help address unmet needs within the communities that we seek to serve.

Eisai is proud to support Padres Pedal the Cause.

hhc
human health care

TO LEARN MORE, PLEASE VISIT [US.EISAI.COM](https://us.eisai.com)

CORP-US2790 ©2024 Eisai Inc. All rights reserved. March 2024



ERASCA
Foundation

The Erasca Foundation
proudly supports

**PADRES PEDAL
THE CAUSE** and is driven by a bold
mission to erase cancer

PADRESPEDAL
THE CAUSE



ThermoFisher
SCIENTIFIC

Thanks to CAR-T cell therapy, Gideon, age 12, is cancer-free and a living testament of the impact of cell therapy treatments.

■ We enable our customers to make the world **healthier, cleaner** and **safer**.

The world leader in serving science



Made for today, tomorrow and for what's needed next

Wherever care happens, BD will be there. Just as it has done for the last 125 years, BD remains committed to innovating and delivering impactful solutions and services for healthcare professionals whenever they need it, and wherever care is delivered.

Visit [bd.com](https://www.bd.com) to learn more.



BD and the BD Logo are trademarks of Becton, Dickinson and Company or its affiliates. © 2022 BD. All rights reserved. 6737

To all who've fought, are fighting,
will fight. **We Pedal for you.**



ResMed.com



Proud to support Padres Pedal the Cause
& Curebound to accelerate cures for cancer.

Together, we enable **the miracles of science.**



maravai.com





TEAM LUSARDI

PADRES PEDAL THE CAUSE

Lusardi Construction Company proudly stands behind Padres Pedal the Cause, having supported the cause for 8 years and contributing to the impressive total of \$260,000 raised. Together, we pedal towards a brighter future, united in the fight against cancer.



LUSARDI
CONSTRUCTION COMPANY

www.LUSARDI.com
760.744.3133



AS WE HAVE FOR OVER A DECADE, CBRE CONTINUES TO SUPPORT

Padres Pedal the Cause

for Lifesaving Cancer Research

CBRE

WE·O'NEIL

proudly supports

CUREBOUND and **PADRESPEDAL**
THE CAUSE

in their relentless fight against cancer
through **unwavering dedication.**
One pedal at a time!



 **corzamedical**

A Remarkable Surgical Experience

Our team of 3,000 associates is united with Curebound in the relentless pursuit of a cure and to make significant strides in medical advancements.

Who we serve



Surgeons



Surgical Teams



Hospitals & ASCs



Distribution Partners



OEM & Private Label

PADRESPEDAL
THE CAUSE

The Sycuan Band of the Kumeyaay Nation
is a proud supporter of
**Curebound/Padres Pedal the Cause
and the quest for a cure**



SYCUANTRIBE.COM



Proudly supporting **Padres Pedal the
Cause** and the quest for a cure
LetsOutdoCancer.com



SAN DIEGO COUNTY LEXUS DEALERS

GIVE BACK BY GETTING IN GEAR

THE THREE-ROW TX



PADRES PEDAL
THE CAUSE

Prototype shown



Commitment to a cure

At JPMorgan Chase we know that the battle against cancer is not a sprint but a marathon. We applaud your leadership, strength and commitment to excellence in the battle against cancer.

We are proud to support Curebound and Padres Pedal the Cause.

JPMORGAN CHASE & CO.

[jpmorganchase.com](https://www.jpmorganchase.com)

© 2024 JPMorgan Chase & Co.

PADRES PEDAL
THE CAUSE



Advancing care. Changing patient lives. Together.

On behalf of all our employees around the globe, Team NuVasive is proud to support Padres Pedal the Cause.



Improving Human Health by
Unlocking the
Power of the Genome

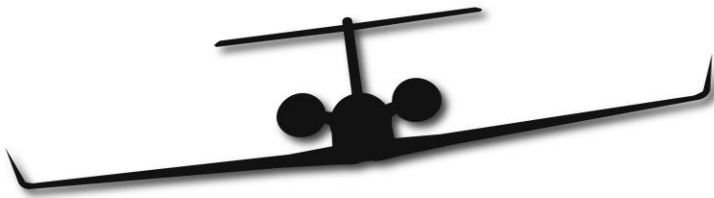
illumina®



We proudly support
Curebound's vision of a
world without cancer.

Cooley

© 2024 Cooley LLP, 3175 Hanover Street, Palo Alto, CA 94304 www.cooley.com



JET AMG[®]

A PROUD SPONSOR OF

CUREBOUND



BEE WELL FOR LIFE®

PADRESPEDAL THE CAUSE

A World
Without
Cancer

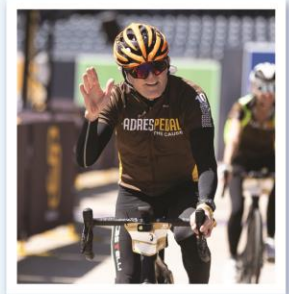


Thank you riders,
we are so proud to
support your efforts!

*Your friends at
Bumble Bee
Seafoods*

This is personal for us.

*Go get 'em
Jeff Killeen!*



Together, We Pedal Towards
A Cancer-Free Future.

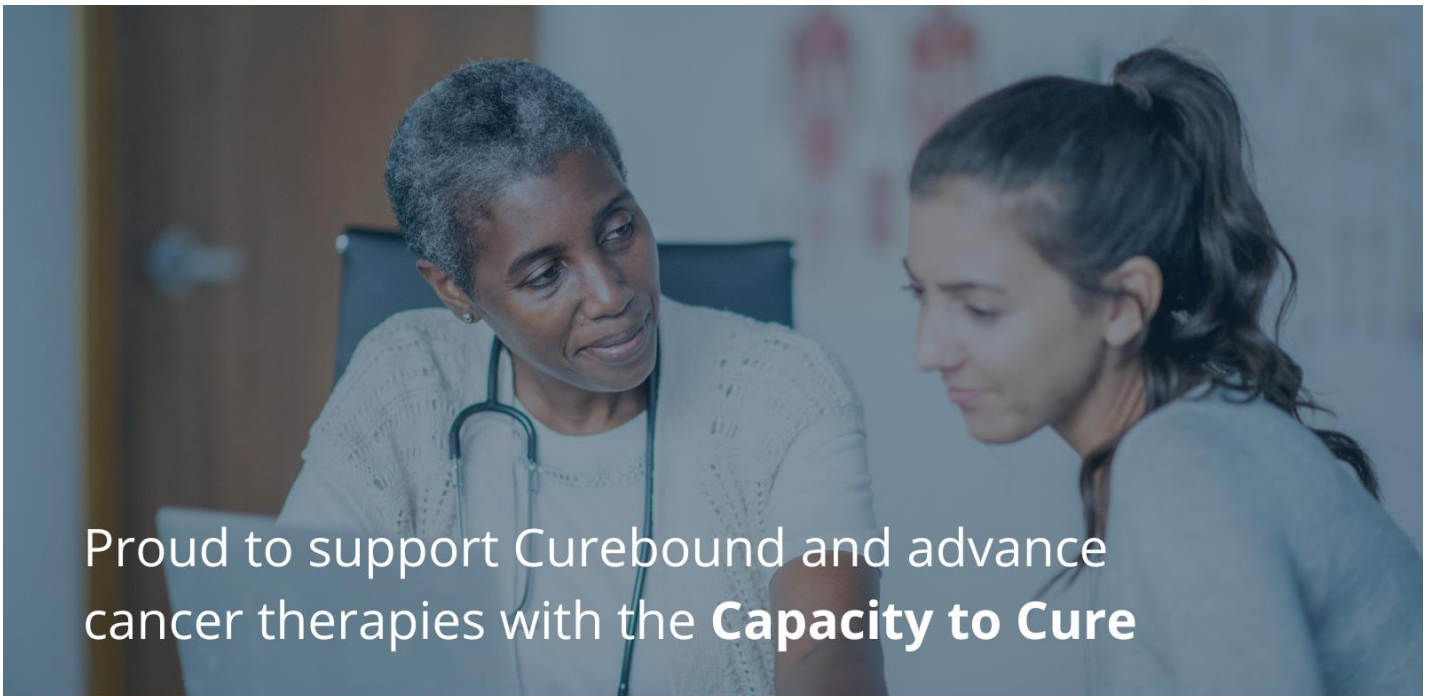
Daiwa[®]
MASSAGE CHAIRS
is a proud sponsor of

PADRESPEDAL
THE CAUSE

A World
Without
Cancer



Proud supporter of
Padres Pedal the Cause
since 2019



Proud to support Curebound and advance
cancer therapies with the **Capacity to Cure**



SANDAG

Bike Anywhere Day 2024

Thursday, May 16

Sign Up Today!



SANDAG.org/bikemonth

NEW

essentia
+
hydroboost

30x
ELECTROLYTES
vs. leading premium still water*

- ✓ VITAMINS B1, B3, B6
- ⊘ NO ARTIFICIAL: Sweeteners, Flavors, Colors

Available in Lemon Lime, Raspberry Pomegranate, Peach Mango flavors

ENHANCED WATER



*Per 15.2 FL OZ: Hydroboost – 200mg Sodium; 170 mg Potassium; 30mg Magnesium. Leading Premium Plain Still Water – 5mg Potassium; 1mg Magnesium; 2mg Calcium



Kuat is proud to support **Padres Pedal the Cause**

kuat

PADRESPEDAL
THE CAUSE

A World
Without
Cancer

kuat.com |  



@2022 Republic Services, Inc.

Republic Services is a proud supporter of Padres Pedal the Cause

Does your business or multi-family property need help with setting up a recycling program?

Contact GCastro2@RepublicServices.com to learn more about Republic Services' offerings and how we can help you with your recycling and waste needs.



REDEN | RIDDELL



AIRES FINANCIAL
WEALTH & INSURANCE SOLUTIONS



PADRES PEDAL
THE CAUSE



ATS WEALTH
MANAGEMENT

is a proud sponsor of

PADRES PEDAL
THE CAUSE



kove



BIRD ROCK
COFFEE ROASTERS
CALIFORNIA

suja
ORGANIC

Real Nutrition For Real Life.

Use code **LEMON15** when you checkout at sujaorganic.com for **15% OFF** your next one-time purchase!

SUJAORGANIC.COM FOLLOW US! @lovesuja @sujaorganic

NOVA
EASY KOMBUCHA
FUN BY NATURE

KEEP SMILING. KEEP MOVING FORWARD.

Locally Brewed
Alcoholic Kombucha
Proud Partner of The San Diego Padres



RAD POWER BIKES



LA | FITNESS

PRIMAL

Marky Sparky®

PADRES PEDAL
THE CAUSE

BALLAST POINT
DEDICATED TO THE CRAFT

WE RIDE FOR a cure
We are proud to support
Padres Pedal the Cause

BALLAST POINT
BREWING COMPANY

Miramar | Little Italy | Home Brew Mart

Please explore responsibly.™ Ballast Point Brewing Co., San Diego, CA.

CELEBRATING OVER 50 YEARS
LA FORTALEZA
 INCORPORATED

PROUD SPONSOR OF

PADRESPEDAL | A World Without Cancer
 THE CAUSE

cyclists
massage

FITNESS QUEST 10

The
 Physical Therapy
 Effect



MOSSY
NISSAN
 Value That Moves You

Delaware North

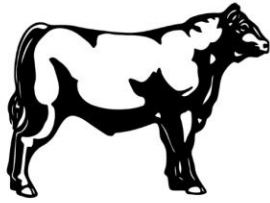
PADRESPEDAL
 THE CAUSE

HANDELS
 — HOMEMADE ICE CREAM SINCE 1945 —

Supports
**CUREBOUND/
 PADRES PEDAL
 THE CAUSE**

BOOK US FOR EVENTS

PADRESPEDAL
 THE CAUSE



LA CARNICERIA
MEAT MARKET

We are a proud partner of
Padres Pedal the Cause

Please Visit Us:
67 N Broadway STE B
Chula Vista, CA 91910

619-500-5812



is a proud sponsor of Padres
PEDAL THE CAUSE
SAMBAZON
AÇAÍ BOWLS



www.sambazon.com

Always Certified Organic
& Fair Trade Açaí

NOVA
EASY KOMBUCHA

FUN BY NATURE

JIMBO'S

 **TKS**[®]
THE KEBAB SHOP



PROUD PARTNER
OF THE SAN DIEGO PADRES &
SUPPORTER OF PADRES PEDAL THE CAUSE

PADRESPEDAL
THE CAUSE

PADRESPEDAL

THE CAUSE

A World Without Cancer

APRIL 7, 2024

Join Curebound & the SD Padres in a challenge to end cancer!



PROUDLY SPONSORED BY **CUTWATER**

PLEASE ENJOY RESPONSIBLY ©2024 Cutwater® Spirits, San Diego, CA



SAN DIEGO

UC San Diego Health



REPUBLIC of music
LEADERS IN EVENT ENTERTAINMENT



HANDLERY
HOTEL
SAN DIEGO



Feeding families, communities, and the future.



Albertsons COMPANIES VONS PAVILIONS

—Foundation—

is proud to participate in Pedal the Cause and supports Curebound in their cancer research and treatment.



PADRESPEDAL
THE CAUSE

PADRES PEDAL

THE CAUSE